



**India Meteorological Department  
(Ministry of Earth Sciences)  
NATIONAL BULLETIN NO. 5 (BoB/02/2025)**

**TIME OF ISSUE: 1245 HOURS IST**

**DATED: 15.07.2025**

**FROM: INDIA METEOROLOGICAL DEPARTMENT**

**(FAX NO. 24643965/24699216/24623220)**

**TO: CONTROL ROOM, NDM, MINISTRY OF HOME AFFAIRS (FAX.NO. 23093750)**

**CONTROL ROOM NDMA (FAX.NO. 26701729)**

**CABINET SECRETARIAT (FAX.NO.23012284, 23018638)**

**PS TO HON'BLE MINISTER FOR S & T AND EARTH SCIENCES (FAX NO.23316745)**

**SECRETARY, MOES (FAX NO. 24629777)**

**H.Q. (INTEGRATED DEFENCE STAFF AND CDS) (FAX NO. 23005137/23005147)**

**DIRECTOR GENERAL, DOORDARSHAN (23385843)**

**DIRECTOR GENERAL, AIR (23421105, 23421219)**

**PIB MOES (FAX NO. 23389042)**

**UNI (FAX NO. 23355841)**

**D.G. NATIONAL DISASTER RESPONSE FORCE (NDRF) (FAX NO. 26105912, 2436 3260)**

**DIRECTOR, PUNCTUALITY, INDIAN RAILWAYS (FAX NO. 23388503)**

**CHIEF SECRETARY, ODISHA (FAX NO. 0674-2536660)**

**CHIEF SECRETARY, WEST BENGAL (FAX NO. 033-22144328)**

**CHIEF SECRETARY, GOVT. OF SIKKIM (FAX NO.0359-2222851)**

**CHIEF SECRETARY, GOVT. OF BIHAR (FAX NO. 0612-2217085)**

**CHIEF SECRETARY, GOVT. OF JHARKHAND (FAX NO. 0651-2400255)**

**CHIEF SECRETARY, GOVT. OF CHHATTISGARH (FAX NO. 0771-2221206)**

**CHIEF SECRETARY, GOVT. OF MADHYA PRADESH (FAX NO. 0755-2551521)**

**CHIEF SECRETARY, GOVT. OF RAJASTHAN (FAX NO. 0141-2227114)**

**CHIEF SECRETARY, GOVT. OF ASSAM (FAX NO. 0361-2260900)**

**CHIEF SECRETARY, GOVT. OF MEGHALAYA (FAX NO. 0364-2225978)**

**Subject: (A) Well Marked Low Pressure area over North Jharkhand and adjoining south Bihar  
(B) Depression over central parts of north Rajasthan\***

**(A) Well Marked Low Pressure area over North Jharkhand and adjoining south Bihar**

The depression over Jharkhand and neighbourhood moved west-northwestwards, weakened into a well marked low pressure area and lay over north Jharkhand and adjoining south Bihar at 0830 hrs IST of today, the 15th July 2025.

It is likely to move further west-northwestwards across Jharkhand and south Bihar towards east Uttar Pradesh during next 24 hours.

**(B) Depression over central parts of north Rajasthan**

The well marked Low Pressure area over central parts of north Rajasthan moved slowly west-northwestwards, concentrated into a depression and lay centred at 0830 hrs IST of today, the 15th July, 2025 over the same region, near latitude 27.4°N and longitude 75.4°E, about 40 km southeast of Sikar and 110 km south-southeast of Churu.

It is likely to continue to move slowly west-northwestwards across north Rajasthan during next 24 hours.

## **Warnings:**

### **(i) Rainfall Warning:**

**Odisha:** Light to moderate rainfall at most places with heavy to very heavy rainfall at isolated places during 15<sup>th</sup> to 16<sup>th</sup> July and heavy rainfall at isolated places on 17<sup>th</sup> July.

**West Bengal & Sikkim:** Light to moderate rainfall at most places with heavy to very heavy rainfall at isolated places over Gangetic West Bengal and Sub-Himalayan West Bengal & Sikkim on 15<sup>th</sup> July and heavy rainfall at isolated places over Sub-Himalayan West Bengal & Sikkim on 16<sup>th</sup> July.

**Jharkhand:** Light to moderate rainfall at most places with heavy to very heavy rainfall at a few places during 15<sup>th</sup> – 16<sup>th</sup> July with extremely heavy rainfall at isolated places on 15<sup>th</sup> July.

**Bihar:** Light to moderate rainfall at most places with heavy to very heavy rainfall at isolated places on 15<sup>th</sup> & 16<sup>th</sup> July and heavy rainfall at isolated places on 17<sup>th</sup> July.

**Chhattisgarh:** Light to moderate rainfall at most places with heavy to very heavy rainfall at isolated places on 15<sup>th</sup> & 16<sup>th</sup> July and heavy rainfall at isolated places on 17<sup>th</sup> July.

**East Uttar Pradesh:** Light to moderate rainfall at most places with heavy to very heavy rainfall at isolated places on 15<sup>th</sup> July and heavy rainfall at isolated places during 16<sup>th</sup> – 18<sup>th</sup> July with heavy to very heavy rainfall at isolated places on 17<sup>th</sup> July.

**West Uttar Pradesh:** Light to moderate rainfall at most places with heavy rainfall at isolated places during 16<sup>th</sup> – 18<sup>th</sup> July.

**East Madhya Pradesh:** Light to moderate rainfall at most places with heavy rainfall at isolated places on 15<sup>th</sup> July and heavy to very heavy rainfall at isolated places during 16<sup>th</sup> -17<sup>th</sup> July.

**West Madhya Pradesh:** Light to moderate rainfall at most places with heavy to very heavy rainfall at isolated places till morning of 15<sup>th</sup> July and heavy rainfall at isolated places during 15<sup>th</sup> -18<sup>th</sup> July.

**East Rajasthan:** Light to moderate rainfall at most places with heavy to very heavy rainfall at a few places on 15<sup>th</sup> July; heavy rainfall at isolated places on 16<sup>th</sup> & 17<sup>th</sup> July.

**West Rajasthan:** Light to moderate rainfall at most places with heavy to very heavy rainfall at a few places on 15<sup>th</sup> & 16<sup>th</sup> July and heavy rainfall at isolated places on 17<sup>th</sup> July.

**Gujarat:** Light to moderate rainfall at most places with heavy rainfall at isolated places on 15<sup>th</sup> July. Heavy rainfall at isolated places over Saurashtra & Kutch on 15<sup>th</sup> July.

**Assam:** Light to moderate rainfall at most places with heavy to very heavy rainfall at isolated places on 15<sup>th</sup> July and heavy rainfall at isolated places on 17<sup>th</sup> July.

**Meghalaya:** Light to moderate rainfall at most places with heavy to very heavy rainfall at isolated places on 15<sup>th</sup> July and heavy rainfall at isolated places on 17<sup>th</sup> July.

### **(ii) Wind Warning:**

- ❖ Squally wind speed reaching 40-50 kmph gusting to 60 kmph is likely over north Rajasthan and adjoining Haryana & northwest Madhya Pradesh for next 24 hours, and over northwest Rajasthan & neighbourhood for subsequent 24 hours.
- ❖ Squally wind speed reaching 30-40 kmph gusting to 50 kmph is likely over Bihar, Jharkhand, North Odisha, north Chhattisgarh and adjoining Gangetic West Bengal during next 24 hours.

### **(v) Impact Expected and Action Suggested due to heavy rainfall and squally winds**

**Impact expected:**

- ❖ Breaking of tree branches, uprooting of small trees like banana, papaya, drum sticks. Strong wind and rain may damage plantation, horticulture and standing crops.
- ❖ Partial damage to vulnerable structures due to strong winds and rain.
- ❖ Minor damage to kutcha houses/walls, huts and roads due to heavy rain.
- ❖ Loose objects may fly.
- ❖ Onshore and offshore operations may get affected.
- ❖ Small ships, trawlers and boats may be affected.
- ❖ Road and rail traffic may be affected due to heavy rain and squally winds.
- ❖ There could be localised landslides, mudslides, landslips, water logging, inundation and flooding over low lying areas.
- ❖ Occasional reduction in visibility due to heavy rainfall.
- ❖ Helicopter services may get affected.

**Action suggested:**

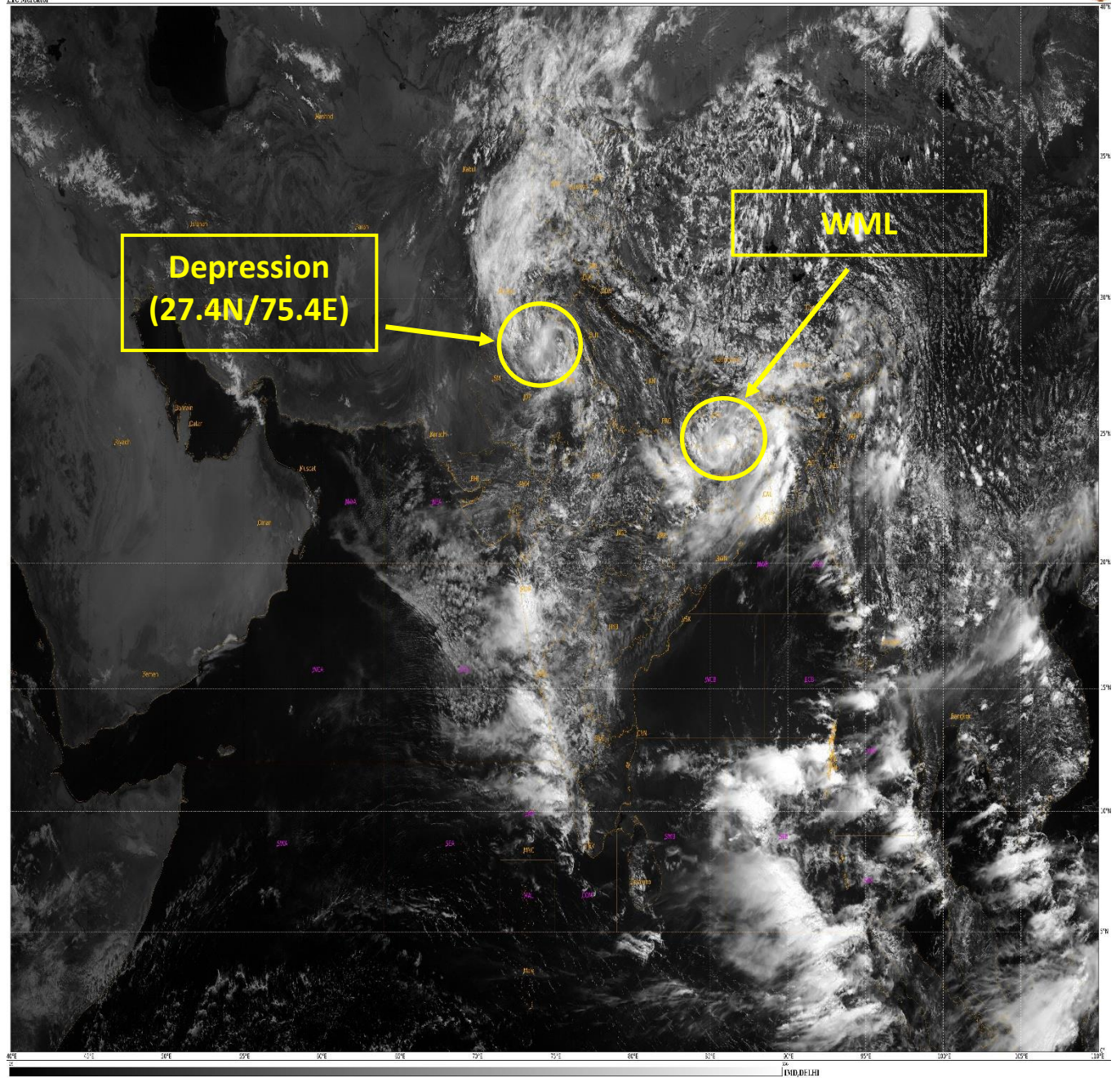
- ❖ People are advised to keep a watch on the weather for worsening conditions and be ready to move to safer places accordingly.
- ❖ Take safe shelters; do not take shelter under trees, as there could be lightning.
- ❖ In case of expected lightning, unplug electrical/ electronic appliances, immediately, get out of water bodies and keep away from all the objects that conduct electricity.
- ❖ Tourism and recreational activities to be regulated.
- ❖ Onshore and offshore activities to be judiciously regulated.
- ❖ Helicopter services to be regulated.

**Significant rainfalls accumulated in past 24 hours recorded at 0830 hrs IST of today, the 15<sup>th</sup> July, 2025 are given in Annexure-I**

**Next bulletin will be issued at 1430 hours IST of today, the 15<sup>th</sup> July, 2025.**

**(Ananda Kumar Das)**  
**Scientist F, New Delhi**

*Copy to: ACWC Kolkata/ACWC Chennai/CWC Bhubaneswar/CWC Vishakhapatnam/Meteorological Centres- Port Blair/ Itanagar/ Kohima/ Agartala/ Gangtok/ Imphal/ Aizwal/ Shillong/ Gangtok/ Regional Meteorological Centre Guwahati*

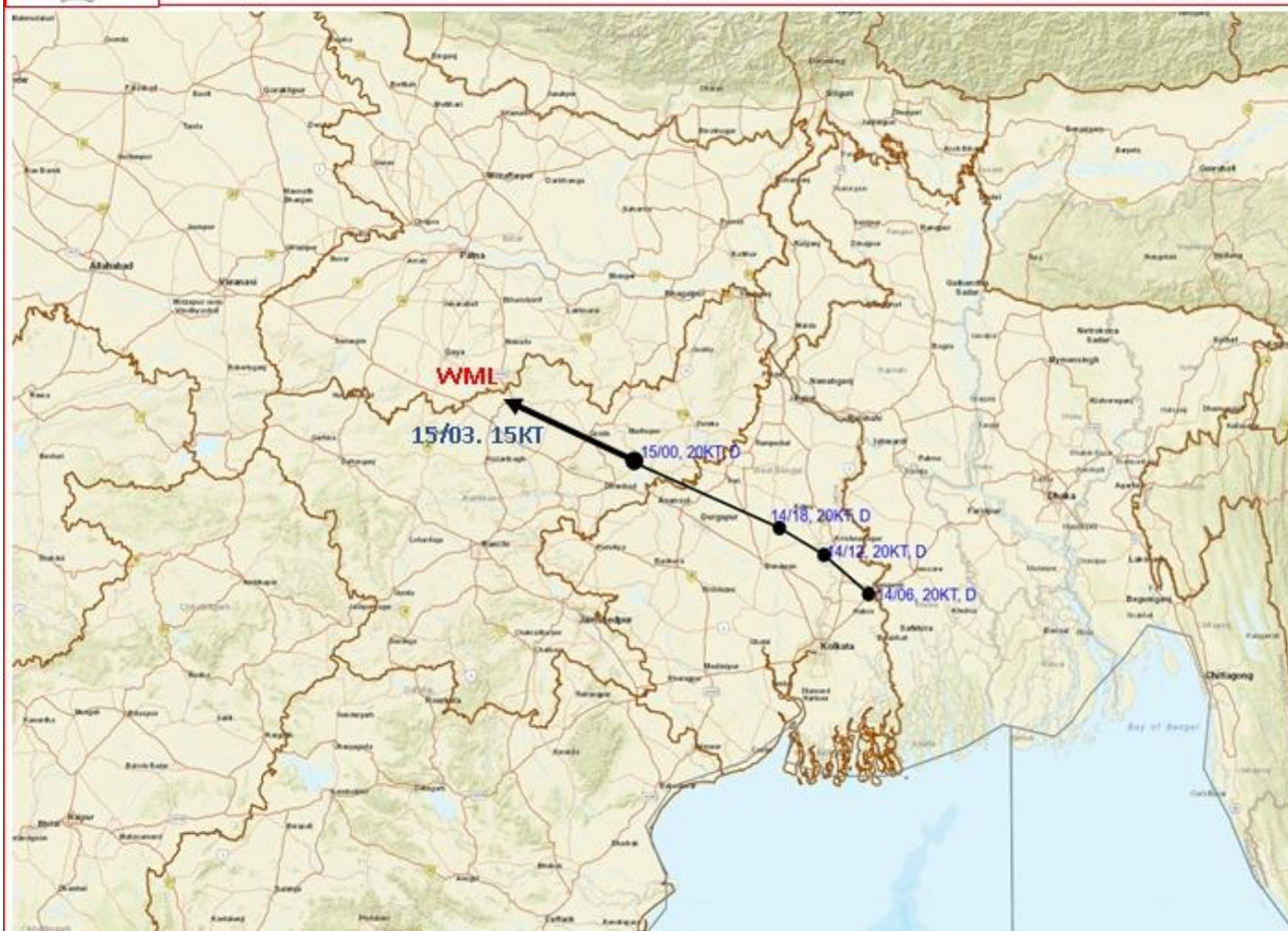


WML – Well Marked Low Pressure Area





# **OBSERVED AND FORECAST TRACK OF DEPRESSION OVER NORTH JHARKHAND AND ADJOINING SOUTH BIHAR AT 0300 UTC (0830 HRS IST) OF 15<sup>th</sup> JULY 2025**

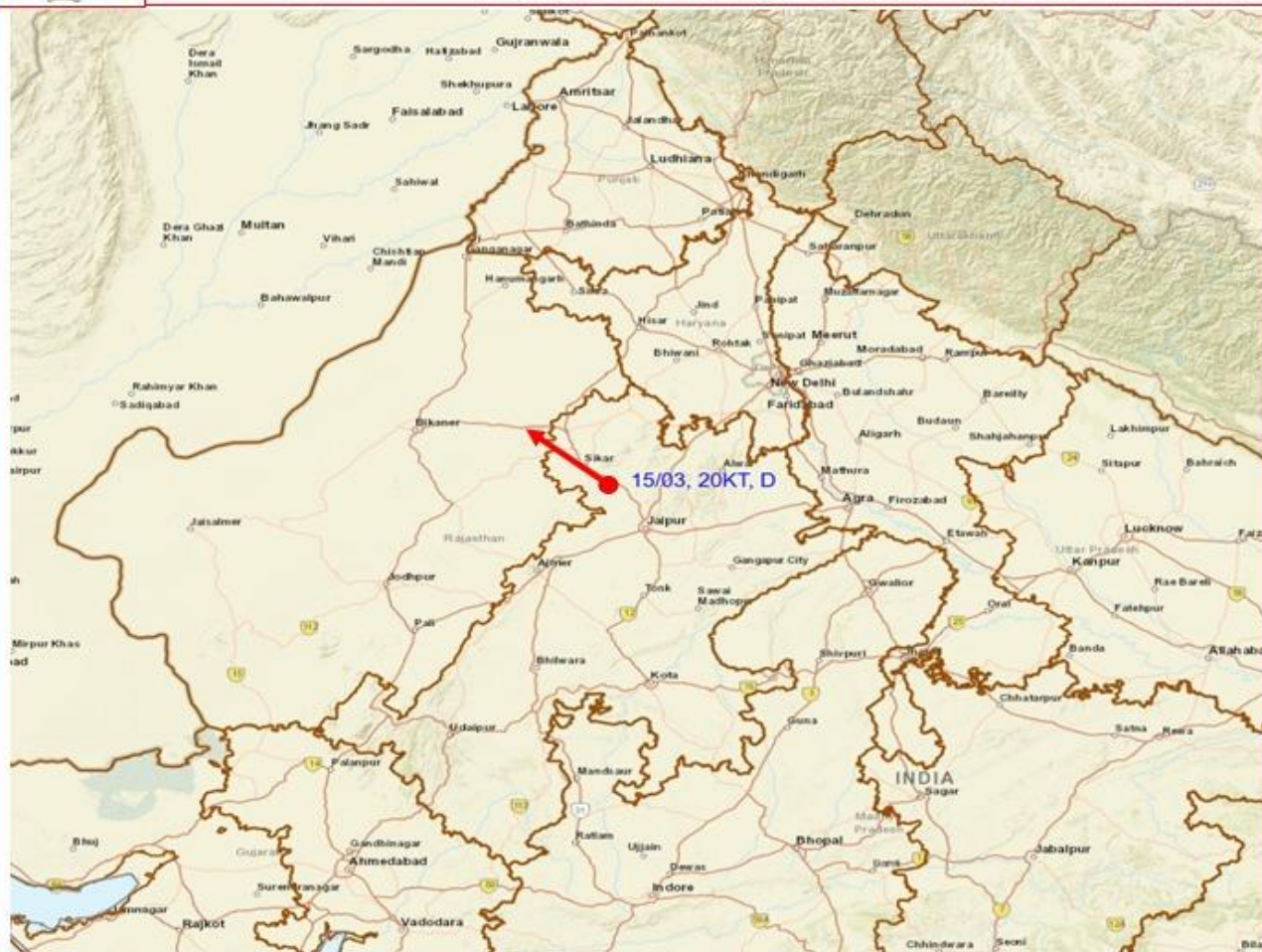


DATE/TIME	: IN UTC
IST	: UTC + 0530
KT	: NAUTICAL MILE S/HOUR = 1.85 KM/HOUR
LPA	: LOW PRESSURE AREA
WML	: WELL MARKED LOW PRESSURE AREA
D	: DEPRESSION (17-27 KT)
DD	: DEEP DEPRESSION (28-33 KT)
CS	: CYCLONIC STORM (34-47 KT)
SCS	: SEVERE CYCLONIC STORM (48-63 KT)
VSCS	: VERY SEVERE CYCLONIC STORM (64-89 KT)
ESCS	: EXTREMELY SEVERE CYCLONIC STORM (90-119 KT)
SuCS	: SUPER CYCLONIC STORM (≥120 KT)

	LESS THAN 34 KT
	34-47 KT
	≥ 48 KT
	OBSERVED TRACK
	FORECAST TRACK
	CONE OF UNCERTAINTY



**OBSERVED AND FORECAST TRACK OF DEPRESSION OVER CENTRAL PARTS OF NORTH  
RAJASTHAN ON 0300 UTC (0830 Hrs. IST) OF 15<sup>th</sup> JULY 2025**

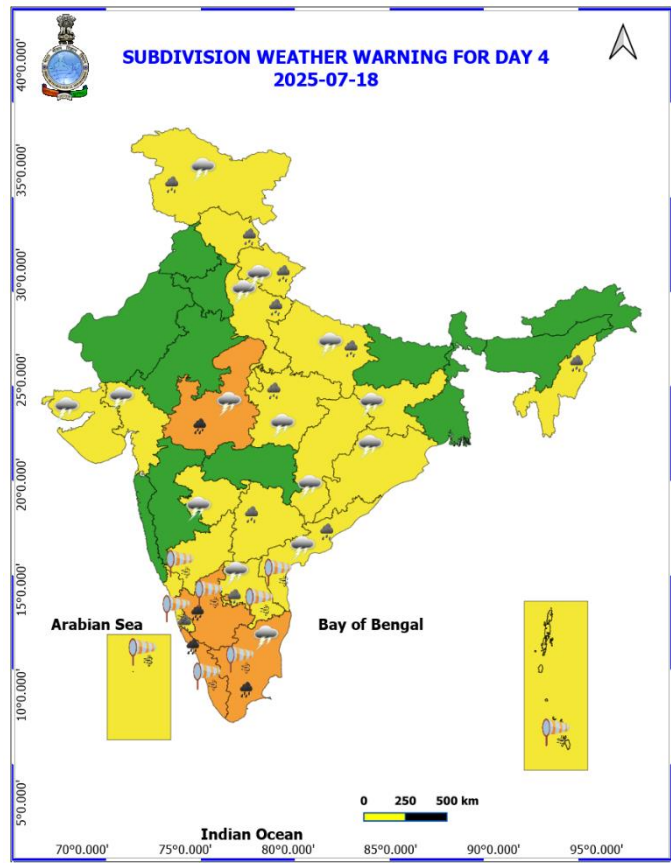
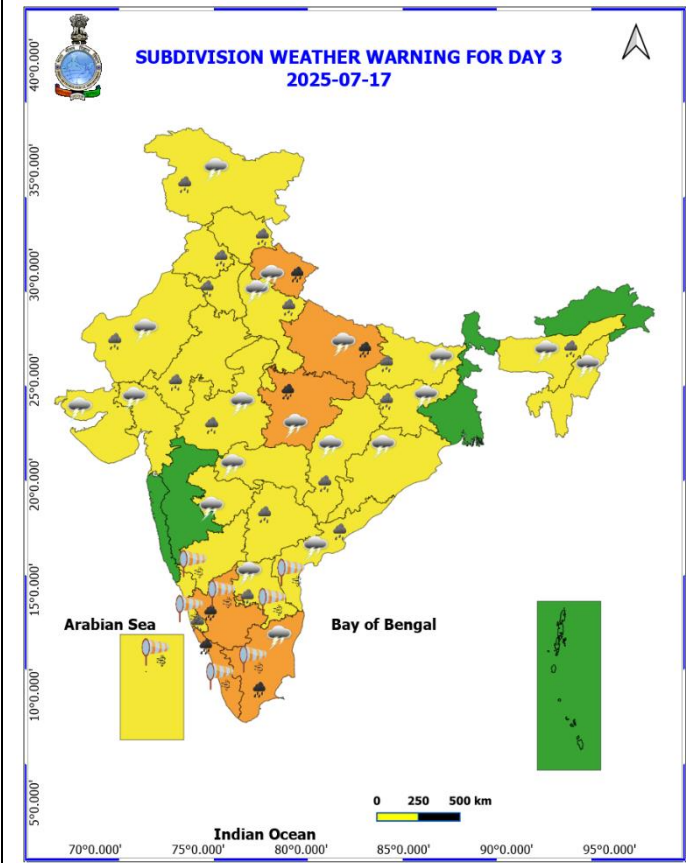
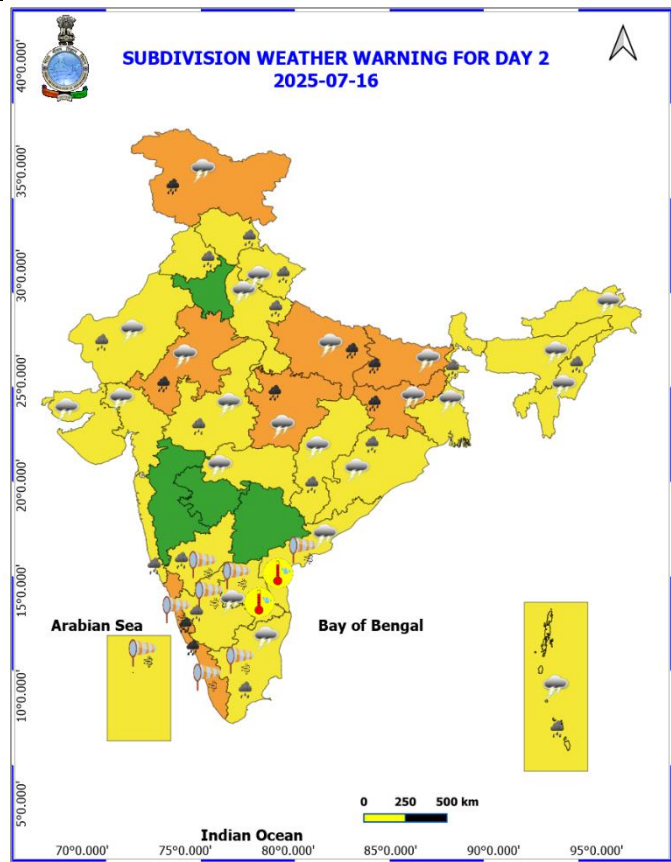
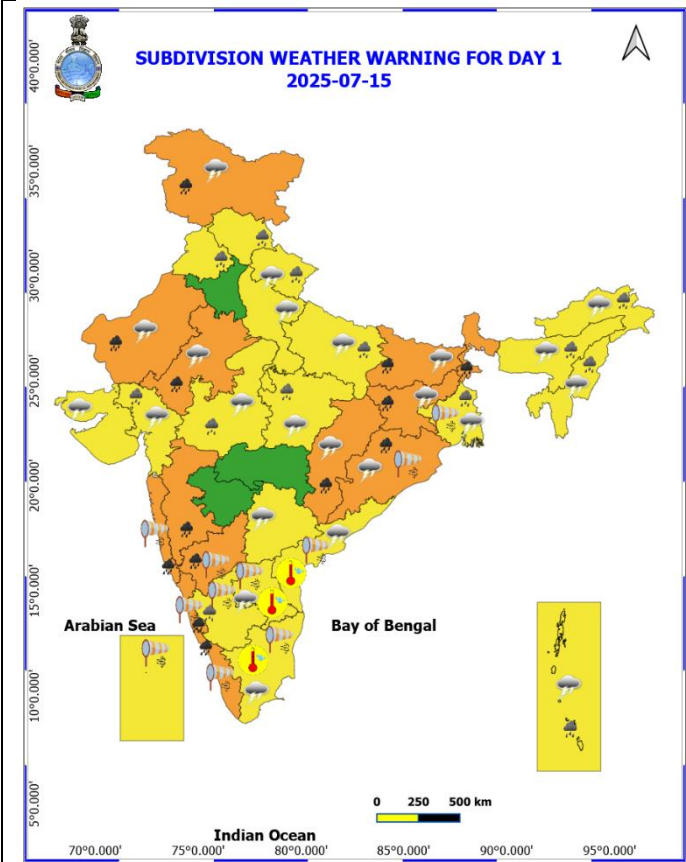


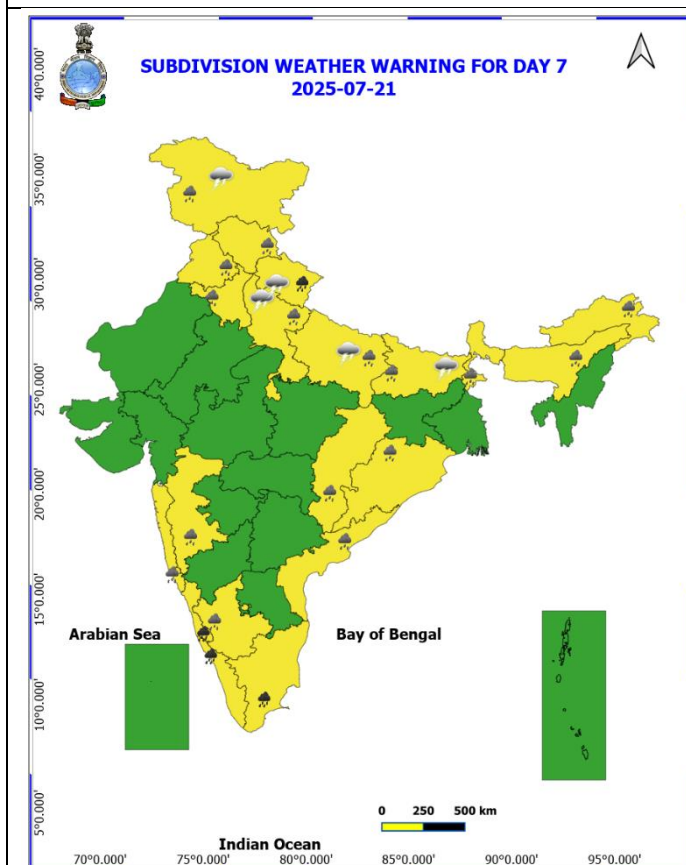
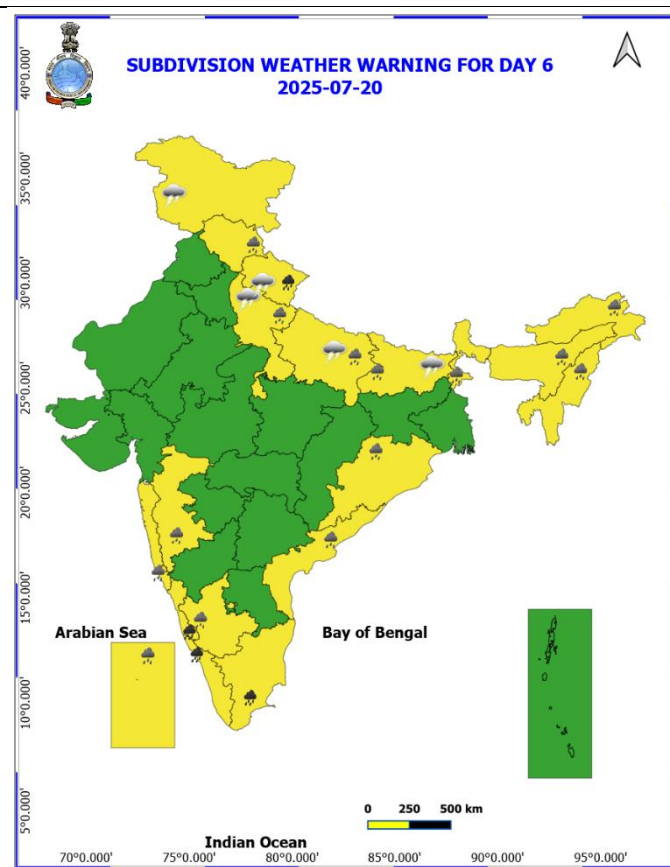
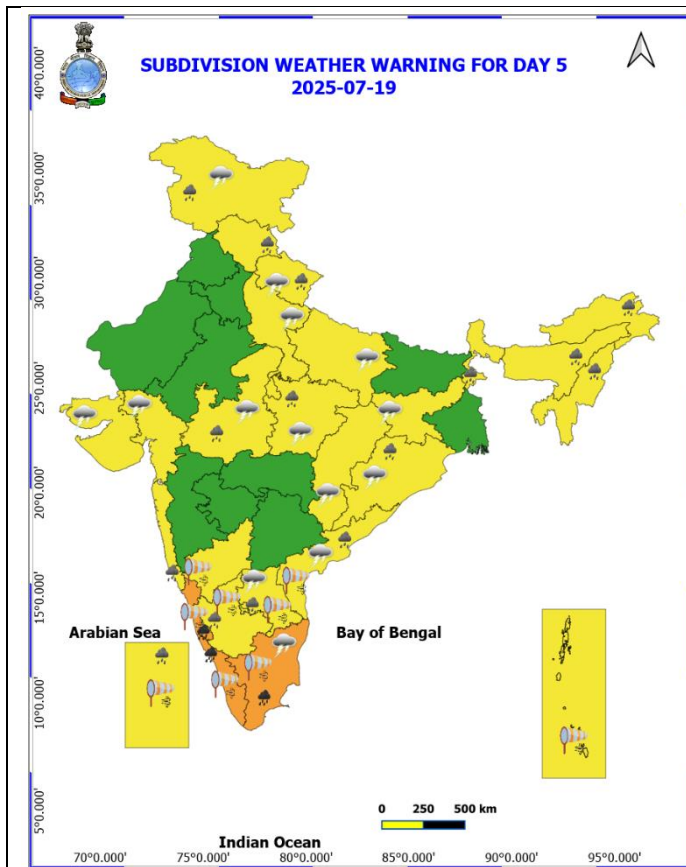
DATE/TIME : IN UTC  
IST : UTC + 0530  
KT : NAUTICAL MILE S/HOUR = 1.85 KM/HOUR  
LPA : LOW PRESSURE AREA  
WML : WELL MARKED LOW PRESSURE AREA  
D : DEPRESSION (17-27 KT)  
DD : DEEP DEPRESSION (28-33 KT)  
CS : CYCLONIC STORM (34-47 KT)  
SCS : SEVERE CYCLONIC STORM (48-63 KT)  
VSCS : VERY SEVERE CYCLONIC STORM (64-89 KT)  
ECS : EXTREMELY SEVERE CYCLONIC STORM (90-119 KT)  
SuCS : SUPER CYCLONIC STORM ( $\geq 120$  KT)

● LESS THAN 34 KT  
● 34-47 KT  
●  $\geq 48$  KT  
— OBSERVED TRACK  
— FORECAST TRACK  
▲ CONE OF UNCERTAINTY



Weather Warning Graphics





Fog
 Heavy Rain
 Very Heavy Rain
 Extremely Heavy Rain
 Thunder & Lightning
 Hailstorm
 Dust Raising Winds

Heavy Snow
 Dust Storm
 Heat Wave
 Warm Night
 Hot Day
 Hot & Humid
 Strong Surface Winds

Cold Wave
 Cold Day
 Ground Frost

**COLOUR CODED WARNING**

**No Warning (No Action)**

**Watch (Be Aware)**

**Alert (Be Prepared To Take Action)**

**Warning (Take Action)**

**Probabilistic Forecast**

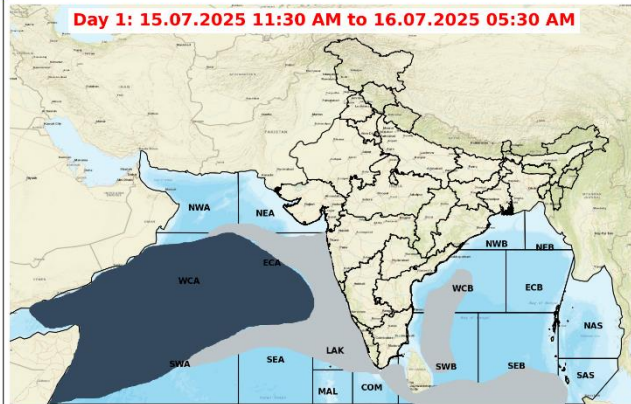
Terms	Probability of Occurrence (%)
Unlikely	< 25
Likely	25 - 50
Very Likely	50 - 75
Most Likely	> 75

\* Red colour warning does not mean "Red Alert", Red colour warning means "Take Action".  
Forecast and Warning for any day is valid from 0030 hours IST of day till 0030 hours IST of next day.  
For more details, kindly visit <https://mausam.ind.gov.in> or contact: 011-24334-4599  
(Service to the Nation since 1875)

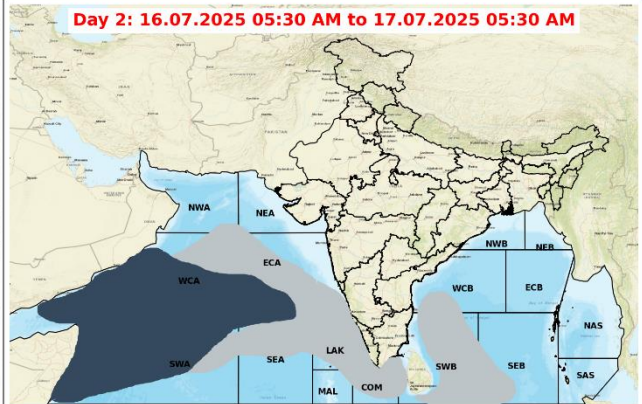


## Fishermen Warning Graphics

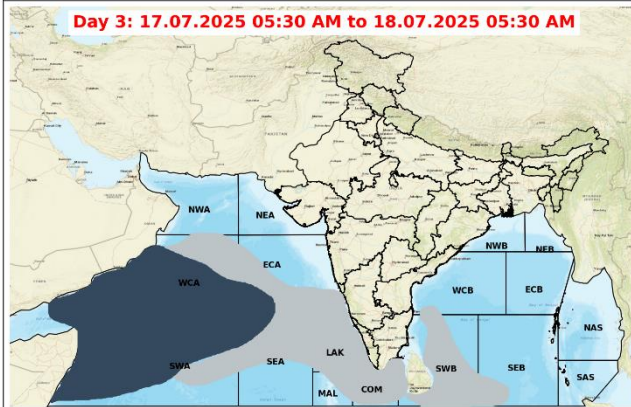
**Day 1: 15.07.2025 11:30 AM to 16.07.2025 05:30 AM**



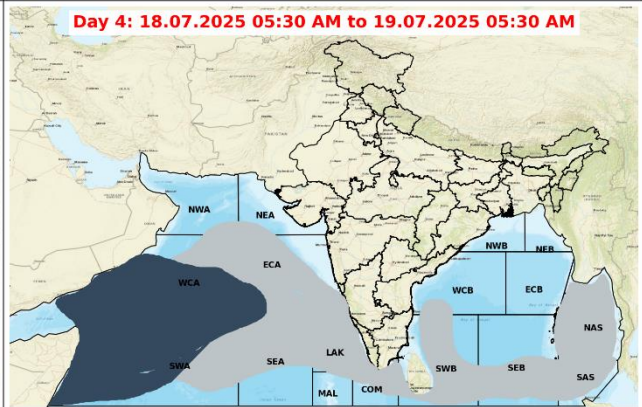
**Day 2: 16.07.2025 05:30 AM to 17.07.2025 05:30 AM**



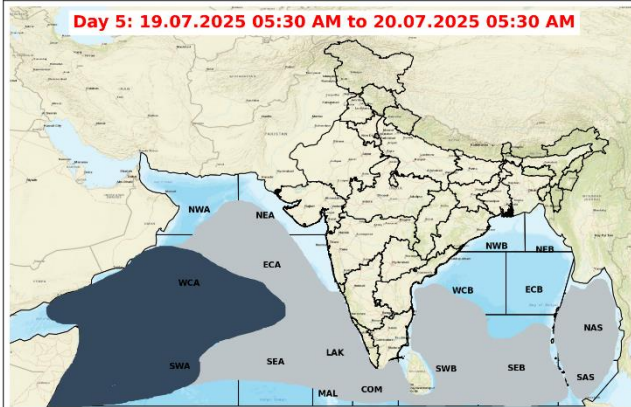
**Day 3: 17.07.2025 05:30 AM to 18.07.2025 05:30 AM**



**Day 4: 18.07.2025 05:30 AM to 19.07.2025 05:30 AM**



**Day 5: 19.07.2025 05:30 AM to 20.07.2025 05:30 AM**



### Legend

- |   |   |
|---|---|
| Squally wind with speed 55-65 kmph gusting to 75 kmph         | CS with Gale winds with speed 60-80 kmph gusting to 90 kmph |
| Squally Weather with wind speed 40-50 kmph gusting to 60 kmph | SCS with Gale wind speed 90-110 kmph gusting to 120 kmph    |
| Squally Weather with wind speed 45-55 kmph gusting to 65 kmph | VSCS with Gale wind speed 120-165 kmph gusting to 185 kmph  |
| Squally wind with speed 45-55 kmph gusting to 65 kmph         | ESCS with Gale wind speed 165-220 kmph gusting to 245 kmph  |
| Squally wind with speed 50-60 kmph gusting to 70 kmph         |   |

Fishermen are advised not to venture into the marked areas.



## Flash Flood Guidance

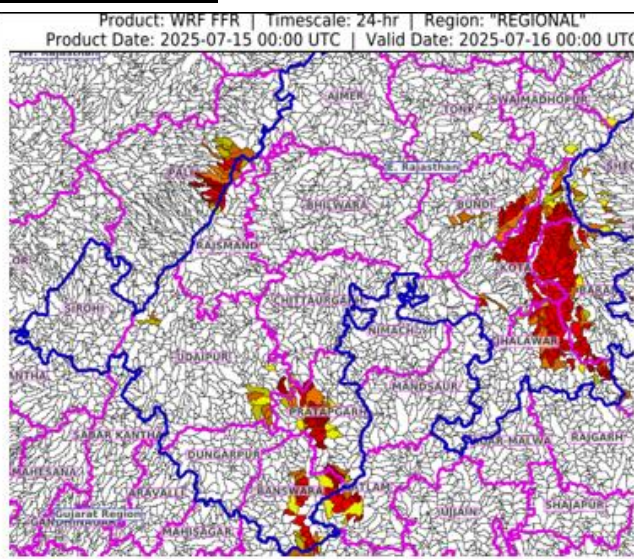
### **24 hours Outlook for the Flash Flood Risk (FFR) till 0530 IST of 16-07-2025 :**

**Low to Moderate flash flood risk** likely over few watersheds & neighbourhoods of following Met Sub-divisions during next 24 hours.

**West Rajasthan** – Pali district.

**East Rajasthan** – Kota, Baran, Jhalawar, Bundi, Sawaimadhopur, Tonk, Rajsmand, Udaipur, Dungarpur, Banswara and Pratapgarh districts.

Surface runoff/ Inundation may occur at some fully saturated soils & low-lying areas over Area of Concern (AoC) as shown in map due to expected rainfall occurrence in next 24 hours.



### **24 hours Outlook for the Flash Flood Risk (FFR) till 0530 IST of 16-07-2025 :**

**Low to Moderate flash flood risk** likely over few watersheds & neighborhoods of following Met Sub-divisions during next 24 hours.

**Gangetic West Bengal** – Bankura, Pashchim Midnipur, and Purulia districts.

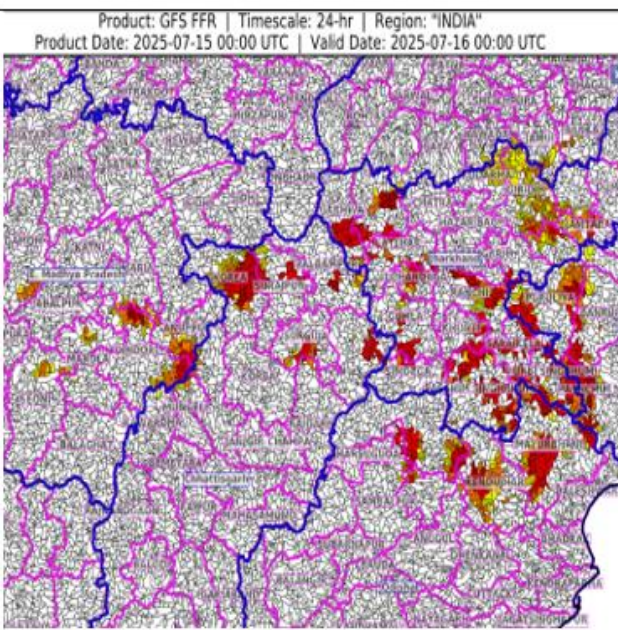
**Odisha** – Kandahar, Mayurbhanj, Anugul, Sundergarh, Sambalpur and Deogarh districts.

**Jharkhand** – Gumla, Simdega, Lohardaga, Latehar, Khunti, Pashchim Singhbhum, Purbi Singhbhum, Saraikela, Ramgarh, Bokara, Dhanbad, Garhwa, Palamu, Kodarma, Giridih, Jamtara, Deogarh, Dumka and Ranchi districts.

**Chhattisgarh** –Surguja, Surajpur, Jashpur, Raigarh, Korea and Balrampur districts.

**East Madhya Pradesh** –Umaria, Annupur, Dindori, Mandla, Seoni, Damoh and Sagar districts.

Surface runoff/ Inundation may occur at some fully saturated soils & low-lying areas over Area of Concern (AoC) as shown in map due to expected rainfall occurrence in next 24 hours.



#### **Flash Flood Risk**

■ **High Risk (Take Action)**

■ **Moderate Risk (Be Prepared)**

■ **Low Risk (Be Updated)**

**Significant rainfall recorded (in cm) from 0830 hours IST of yesterday to 0830 hours IST of today:**

**Jharkhand:** Rajmahal (dist Sahibganj) 19; Maharo (dist Dumka) 14; Zrs Dumka (dist Dumka) 12; Daltonganj (dist Palamu), Maheshpur (dist Pakur), Messenjar (dist Dumka), Manoharpur (dist West Singhbhum), Goilkera (dist West Singhbhum) 9 Each; Jamshedpur AP (dist East Singhbhum), Chandil (dist Seraikela-kharsawan), Rajdhanwar (dist Giridih), Chandrapura (dist Bokaro), Anandpur (dist West Singhbhum), Sisai (dist Gumla), Chainpur (dist Palamu), Manoharpur Phc (dist West Singhbhum) 8 Each; Chaibasa (dist West Singhbhum), Amrapara (dist Pakur), Jamshedpur (dist East Singhbhum), Bokaro Thermal (dist Bokaro), Gudri (dist West Singhbhum), Chakulia (dist East Singhbhum), Boram (dist East Singhbhum) 7 Each; **Konkan & Goa:** Savarde-arg (dist Ratnagiri) 19; Sudhagad Pali (dist Raigad), Chiplun (dist Ratnagiri), Rajapur (dist Ratnagiri) 14 Each; Mandangad (dist Ratnagiri), Mhasla (dist Raigad) 13 Each; Guhagarh (dist Ratnagiri), Roha (dist Raigad), Dodamarg (dist Sindhudurg) 12 Each; Mangaon (dist Raigad), Shriwardhan (dist Raigad), Ratnagiri (dist Ratnagiri), Sawantwadi (dist Sindhudurg), Sangameshwar Devrukh (dist Ratnagiri), Lanja (dist Ratnagiri) 11 Each; Kudal (dist Sindhudurg), Dapoli ARG (dist Ratnagiri), Poladpur (dist Raigad) 10 Each; Harnai IMD (dist Ratnagiri), Pen (dist Raigad), Tala (dist Raigad) 9 Each; Matheran (dist Raigad), Murud (dist Raigad), Ponda (dist North Goa), Canacona (dist South Goa), Awalegaon - ARG (dist Sindhudurg), Wakwali ARG (dist Ratnagiri), Quepem (dist South Goa) 8 Each; Sanguem (dist South Goa), Khed (dist Ratnagiri), Kankavli (dist Sindhudurg) 7 Each; **East Rajasthan:** Bijoliya SR (dist Bhilwara) 18; Bhainsroadgarh SR (dist Chittorgarh) 17; Niwai (dist Tonk) 13; Mandana SR (dist Kota) 12; Sambhar SR (dist Jaipur) 10; Rajsamand (dist Rajsamand), Naraina SR (dist Jaipur) 9 Each; Chothkabarwara SR (dist Sawai Madhopur) 8; Deogarh (dist Rajsamand), Malpura (dist Tonk), Veja SR (dist Dungarpur), Tonk Tehsil SR (dist Tonk), Lachmangarh (dist Sikar), Mavli (dist Udaipur), Piplu SR (dist Tonk), Chomu (dist Jaipur) 7 Each; **Coastal Karnataka:** Mulki (dist Dakshina Kannada) 17; Castle Rock (dist Uttara Kannada) 14; Shakti Nagar (dist Dakshina Kannada) 12; Mangaluru AP (dist Dakshina Kannada), Bantwal (dist Dakshina Kannada), Kadra (dist Uttara Kannada), Kundapur (dist Udupi) 11 Each; Kota (dist Udupi) 10; Manki (dist Uttara Kannada) 9; Ankola (dist Uttara Kannada), Shirali PTO (dist Uttara Kannada), Sulya (dist Dakshina Kannada) 8 Each; Mani (dist Dakshina Kannada), Siddapura (dist Udupi), Gokarna (dist Uttara Kannada) 7 Each; **Jammu-Kashmir-Ladakh-Gilgit-Baltistan-Muzaffarabad:** Udampur(IAF) (dist Udampur) 15; **Madhya Maharashtra:** Mahabaleshwar (dist Satara) 15; Gaganbawada (dist Kolhapur) 13; Radhanagari (dist Kolhapur) 12; Shahuwadi (dist Kolhapur), Lonavala ARG (dist Pune) 10 Each; Igatpuri (dist Nashik) 8; **Gangetic West Bengal:** Debagram (dist Nadia) 14; Tusuma (dist Purulia) 9; Midnapore (dist West Midnapore), Kharidwar (dist Purulia), Hetampur (dist Birbhum), Berhampore (dist Murshidabad) 8 Each; Kansabati Dam (dist Bankura), Rampurhat (DRMS) (dist Birbhum), Phulberia (dist Purulia), Midnapore(CWC) (dist West Midnapore), Jangipur (dist Murshidabad) 7 Each; **West Rajasthan:** Makrana SR (dist Nagaur) 14; Degana (dist Nagaur) 12; Parbatsar (dist Nagaur), Nawa (dist Nagaur) 11 Each; Pali (dist Pali) 9; Ratangarh (dist Churu), Anupgarh Tehsil SR (dist Sri Ganganagar) 8 Each; Padampur (dist Sri Ganganagar), Sedwa SR (dist Barmer) 7 Each; **Kerala & Mahe:** Kudulu (dist Kasargod) 12; Muliya AWS (dist Kasargod) 11; Bayar AWS (dist Kasargod) 10; Hosdurg (dist Kasargod), Panathur AWS (dist Kasargod) 9 Each; **Odisha:** Telkoi (dist Keonjhar) 12; Rajgangpur (dist Sundargarh) 11; Bargaon (dist Sundargarh), Reamal (dist Deogarh) 10 Each; Tensa (dist Sundargarh), Barkote (dist Deogarh), Banspal (dist Keonjhar), Kutra (dist Sundargarh) 9 Each; Batagaon (dist Sambalpur), Chendipada (dist Angul), Baripada (dist Mayurbhanj), Mandira Dam (dist Sundargarh), Lathikata (dist Sundargarh) 8 Each; Samakhunta (dist Mayurbhanj), Anandpur (dist Keonjhar), Hatadihi (dist Keonjhar), Khaira (dist Balasore), Ghasipura (dist Keonjhar) 7 Each; **Assam & Meghalaya:** Khowang (dist Dibrugarh) 12; **Sub Himalayan West Bengal & Sikkim:** Amfu Kalimpong (dist Kalimpong) 12; Kalimpong (dist Kalimpong), Ghatia T.e. (dist Jalpaiguri) 11 Each; Hilla T.e. (dist Jalpaiguri), Kurti T.e. (dist Jalpaiguri) 10



Each; Buxaduar (dist Alipurduar), Malda (dist Malda), Indong T.e. (dist Jalpaiguri), Lava (dist Kalimpong) 9 Each; Chengmari/Diana (dist Jalpaiguri), Bhagatpur Tea Estate (dist Jalpaiguri), Chalouni Tea Estate (dist Jalpaiguri) 8 Each; Darjeeling (dist Darjeeling), Rongo (dist Kalimpong), Chel (dist Jalpaiguri), Tra Nagrakata (dist Jalpaiguri), Zurrantee T.e (dist Jalpaiguri), Nagarkata (dist Jalpaiguri) 7 Each; **Punjab**: Bhatinda IAF (dist Bhatinda) 11; Bhatinda AMFU (dist Bhatinda) 9; Faridkot (dist Faridkot) 7; **East Uttar Pradesh**: Chhibramau (dist Kannauj) 9; **South Interior Karnataka**: Agumbe AWS (dist Shivamogga) 9; **West Uttar Pradesh**: Karhal (dist Mainpuri) 8; **Chhattisgarh**: Latori (dist Surajpur) 8; Chando (dist Balrampur) 7; **Gujarat Region**: Vansda (dist Navsari) 8; Saraswati (dist Patan), Dediapada (dist Narmada) 7 Each; **East Madhya Pradesh**: Sidhi (gopadbanas) (dist Sidhi) 7; **North Interior Karnataka**: Londa (dist Belagavi) 7; **Arunachal Pradesh**: Deomali AWS (dist Tirap) 7; **Bihar**: Sangrampur (dist Monghyr), Amdabad (dist Katihar) 7 Each.